

ORDER OF
United Commercial Travelers
of America.

KENTUCKY, VIRGINIA,
MARYLAND, DISTRICT OF COLUMBIA,
WEST VIRGINIA.



Ninth Annual Session,

CHARLESTON, - WEST VA.

May . . . 25,-26,-27, . . . 1905.

THE TRIBUNE PRINTING COMPANY.
CHARLESTON, W. VA.

Roster of Grand Council.

- J. T. MORGAN, JR., *Grand Counselor.*
- T. J. PHELPS, *Grand Junior Counselor.*
- R. N. GREATHEAD, *Past Grand Counselor.*
- G. F. BROWN, *Grand Secretary.*
- JOS. E. CUNI, *Grand Treasurer.*
- E. O. HIEHLE, *Grand Conductor.*
- W. E. CONNELL, *Grand Page.*
- W. T. SHEPHERD, *Grand Sentinel.*

Grand Executive Committee:

- | | |
|------------------|-------------------|
| S. W. BOOHER. | H. S. SOMERVILLE. |
| J. W. WILTSHIRE. | H. H. HARRIS. |

Officers of Kanawha Council No. 21.

L. C. STEPHENSON,	. . .	<i>Senior Counselor.</i>
F. M. ULSAMER,	. . .	<i>Junior Counselor.</i>
R. C. JEFFORDS,	. . .	<i>Past Counselor.</i>
W. E. CONNELL,	. . .	<i>Secretary & Treasurer.</i>
G. O. TOBIAS,	. . .	<i>Conductor.</i>
A. B. WADELL,	. . .	<i>Page.</i>
H. A. LIGHTNER,	. . .	<i>Sentinel.</i>

Executive Committee:

W. B. ROCK.	J. R. KING.
C. B. REED.	E. S. WITT.

Programme.

Thursday, 10 A. M.

Opening Exercise at Burlew Opera House.

- MUSIC Opera House Orchestra.
INVOCATION, Rev. R. D. Roller, D. D.
INTRODUCTORY, H. P. Cannon, P. G. Councillor.
ADDRESS OF WELCOME, Jno. A. Jarrett, Mayor of City.
RESPONSE. J. T. Morgan, Grand Councillor of Kentucky, Maryland, Virginia, West Virginia and District of Columbia U. C. T.
QUARTETTE, Messrs. Matthews, Fry, Vickers and Adams.
CLOSING ADDRESS, Hon. W. E. Chilton.
BENEDICTION, Rev. M. D. Walker.

AFTERNOON.

- 2:00—Grand Council Meeting at K. P. Hall.
2:30—Ball Game at Ball Park between Huntington No. 53, and Kanawha No. 21, U. C. T.'s.
3:00—Ladies' Reception at Ruffner Hotel.
4:00—Boat Ride on the Kanawha.
8:00—Meeting of Kanawha Council No. 21. Initiation of Candidates by Grand Council Officers, K. P. Hall, Capitol Street.

Friday Morning.

9:00—Parade. Form at Ruffner Hotel.

AFTERNOON.

2:00—Eastern time. K. & M. Train to Gauley, return 6:30.

2:30—Grand Council Meeting.

3:00—Boat Ride on Kanawha.

8:00—Ball and Refreshments at Elks' Hall, Quarrier St.

Saturday Morning.

9:00—Street Cars and Boat to Kelly Axe Factory.

9:00—Ladies' Carriage Ride through City and to Axe Factory.

AFTERNOON.

2:30—Ball Game at Park between Kanawha No. 21 and Huntington No. 53, U. C. T.'s.

3:00—Boat Ride on Kanawha

8:00—Informal Reception at Hotel Ruffner.

Sunday Morning.

11:00—Services at Baptist Temple, cor. Washington and Capitol Sts. Sermon by Rev. T. C. Johnson, D. D.



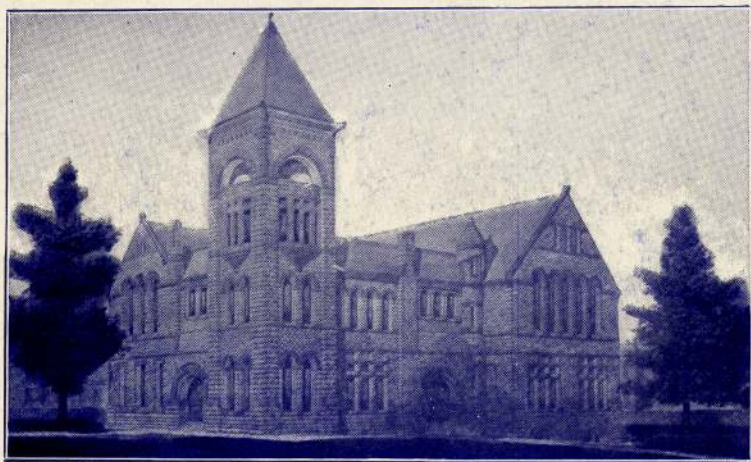
CAPITOL BUILDING.



CAPITAL ANNEX.



FEDERAL BUILDING AND POST OFFICE.



KANAWHA COUNTY COURT HOUSE.



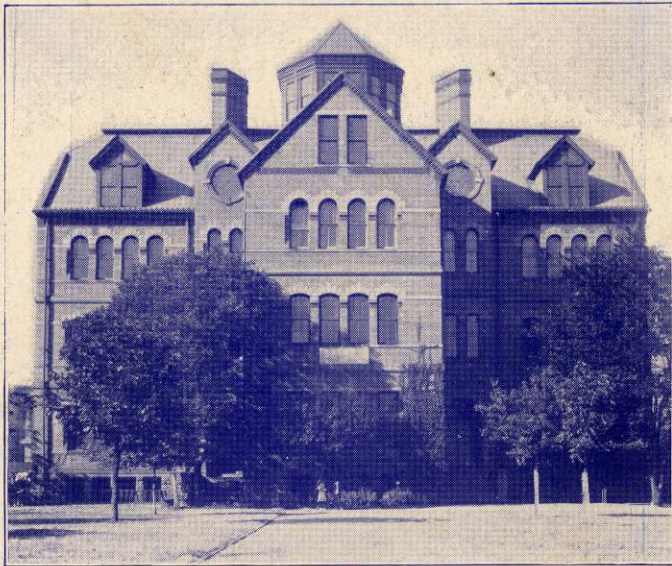
HOTEL KANAWHA—CLEM. W. EASTER, MGR.



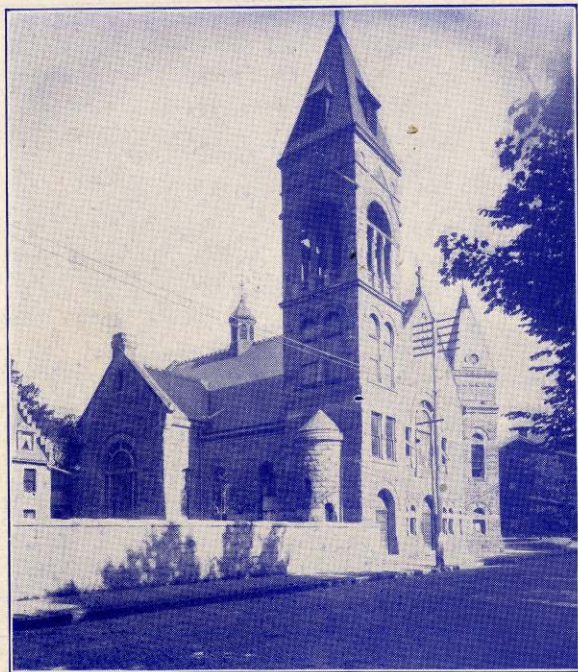
HOTEL RUFFNER—G. O. TAYLOR, MANAGER.



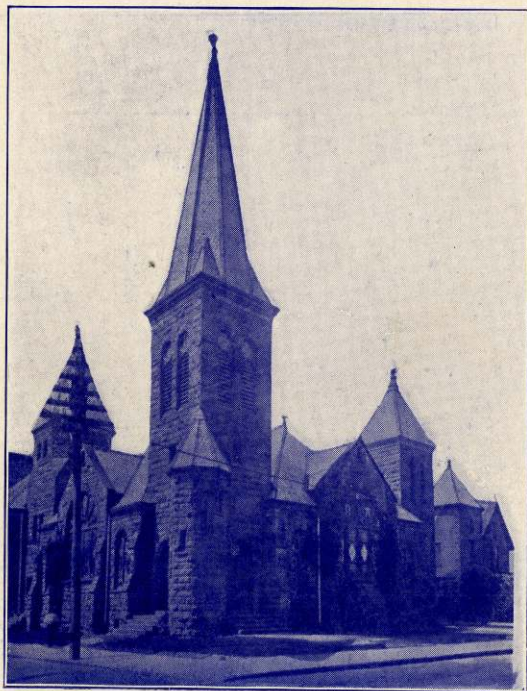
ELK HOTEL.—C. L. TOPPING, PROP.



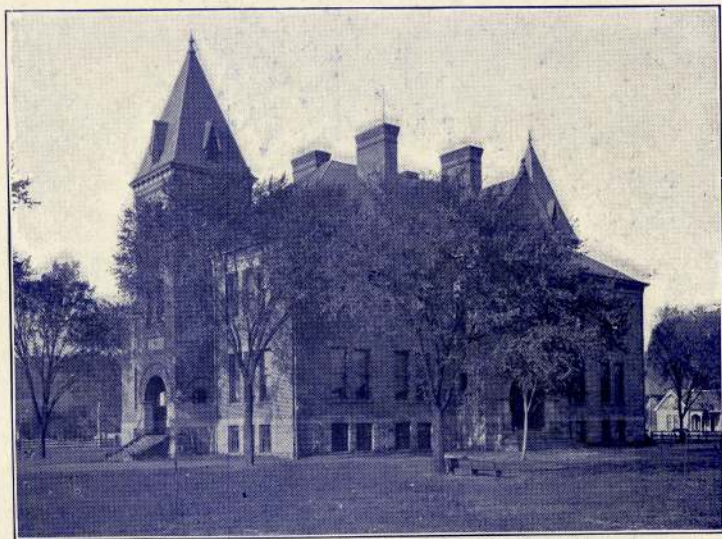
UNION SCHOOL BUILDING.



R. C. CHURCH OF THE SACRED HEART.



FIRST PRESBYTERIAN CHURCH.



LINCOLN SCHOOL BUILDING.



CITIZENS NATIONAL BANK.
M. W. WILLIAMSON, CASHIER.



KANAWHA VALLEY BANK.
J. L. DICKINSON, CASHIER.



KANAWHA NATIONAL BANK.

E. A. REID, CASHIER.



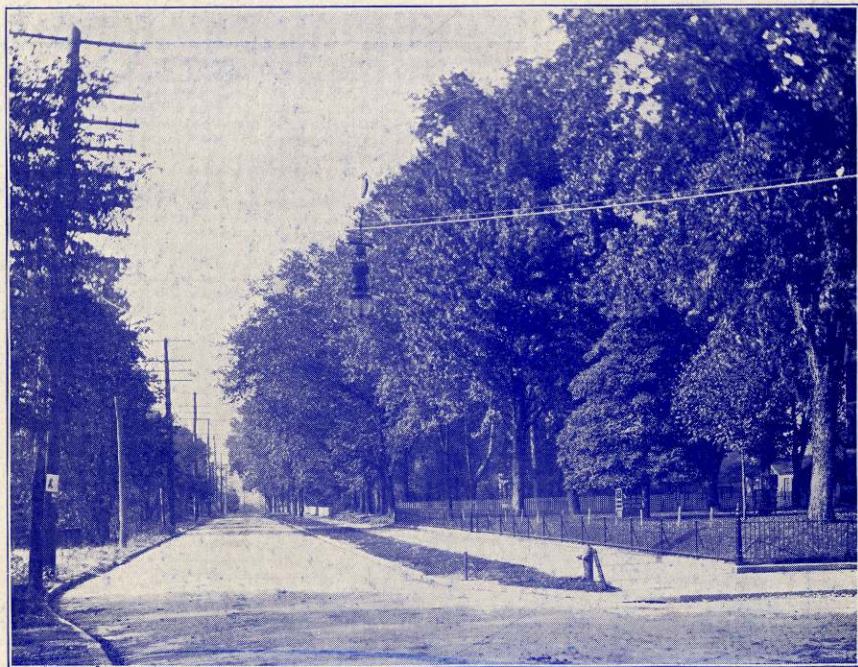
NOYES, THOMAS & CO.,
WHOLESALE DRY GOODS, NOTIONS AND HATS.



THE PARADE ON CAPITOL STREET.



SCENE ON CAPITOL STREET FROM VIRGINIA STREET.



SCENE ON UPPER KANAWHA STREET.



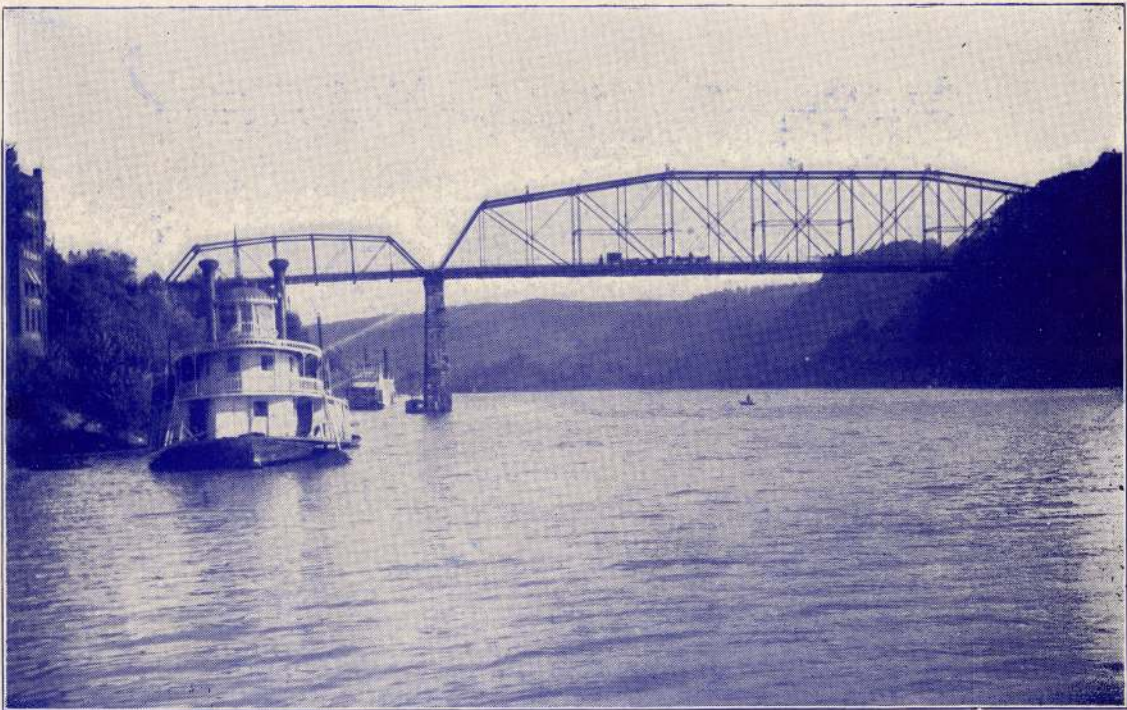
SCENE ON CAPITOL STREET OPPOSITE POST OFFICE.



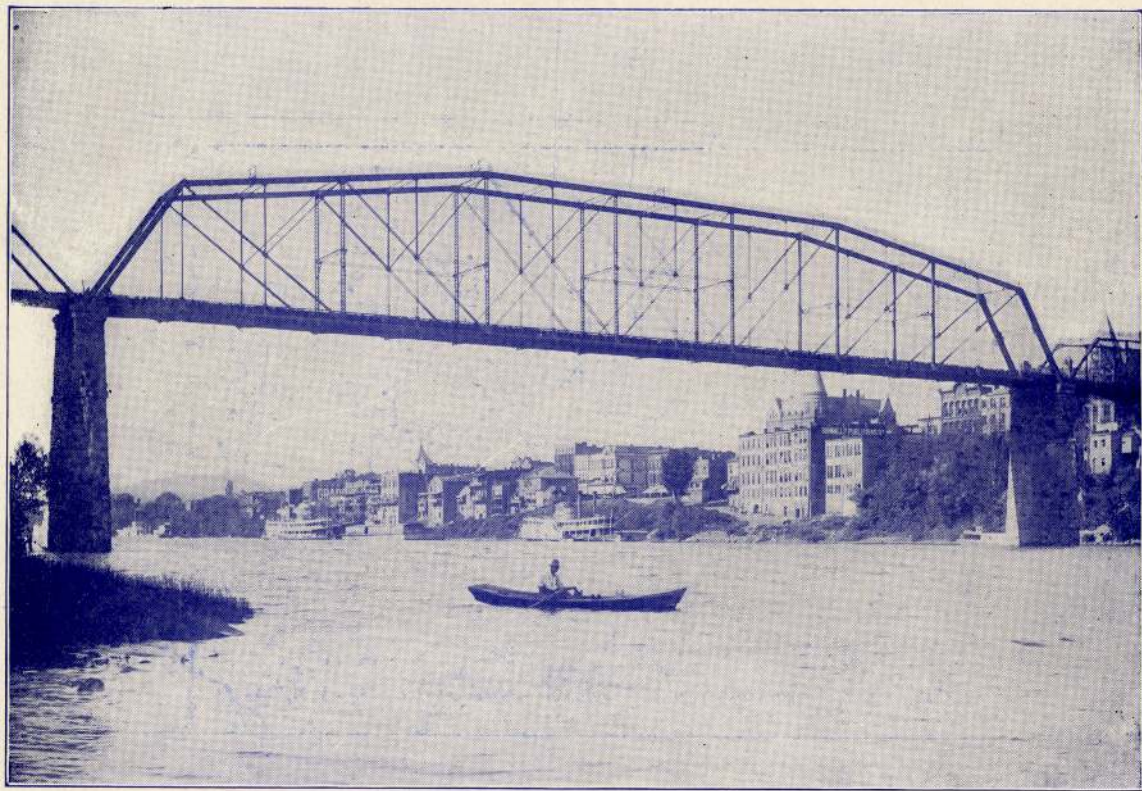
KANAWHA STREET.



INTERIOR OF THE ARCADE.



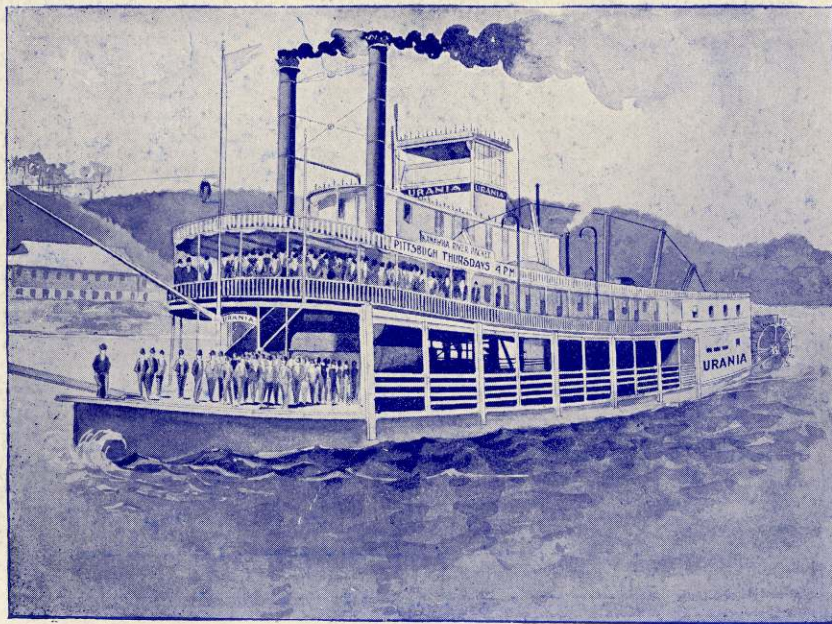
SCENE LOOKING UP THE GREAT KANAWHA RIVER.



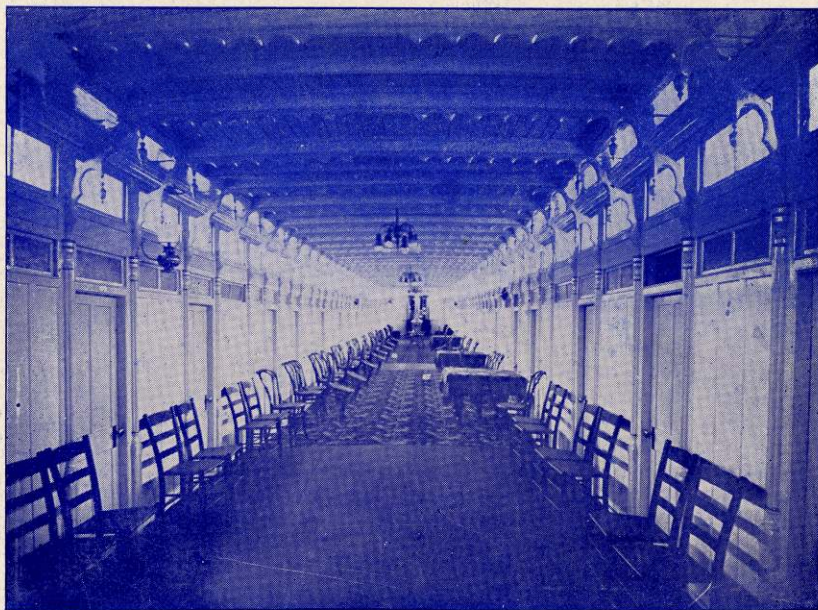
SCENE LOOKING DOWN THE GREAT KANAWHA RIVER.



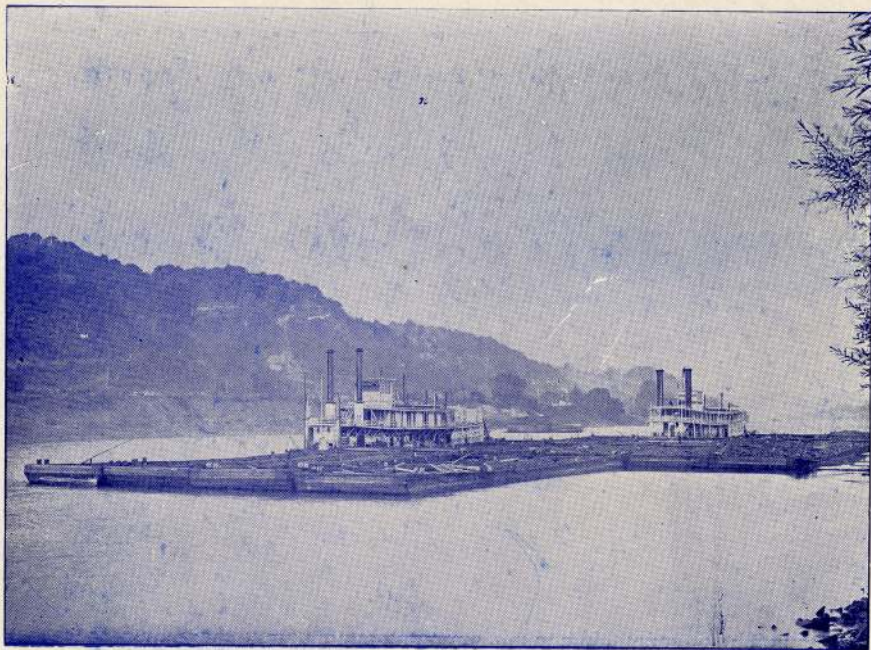
OLD SUSPENSION BRIDGE ACROSS ELK RIVER—FELL DEC. 15, 1904.



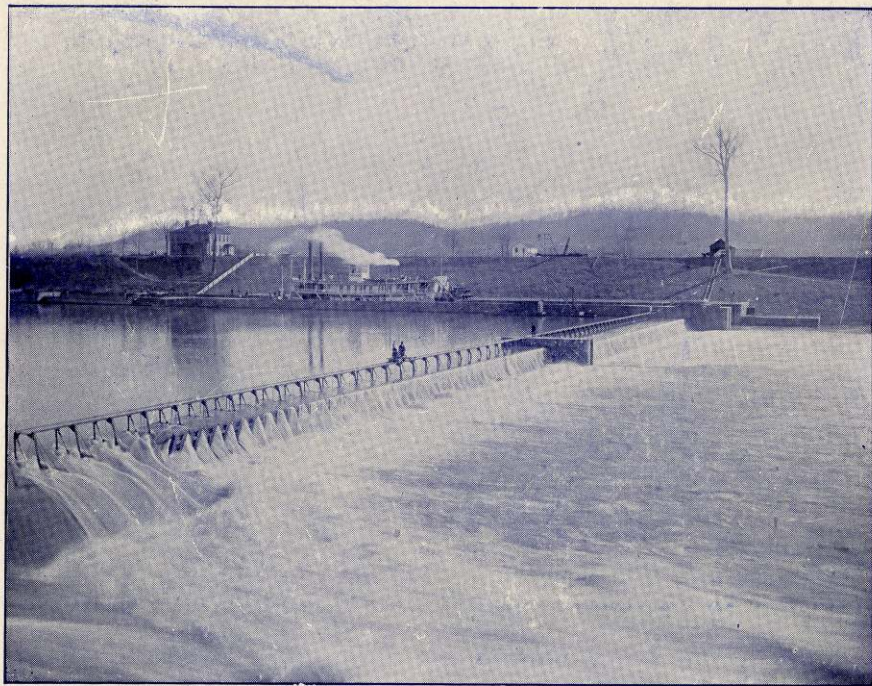
SCENE FROM RIVER FRONT.



CABIN OF KANAWHA PASSENGER PACKET.



BLACK DIAMONDS ON WAY TO MARKET.



GOVERNMENT LOCK NO. 6.



EXTRACT AND DYE FACTORY.

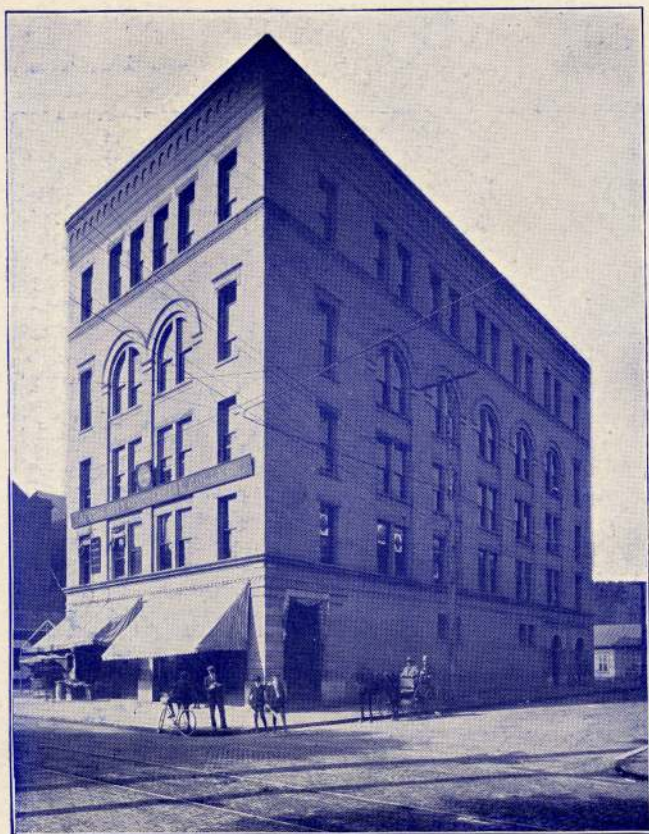


FRANKENBERGER & CO.—CLOTHING.

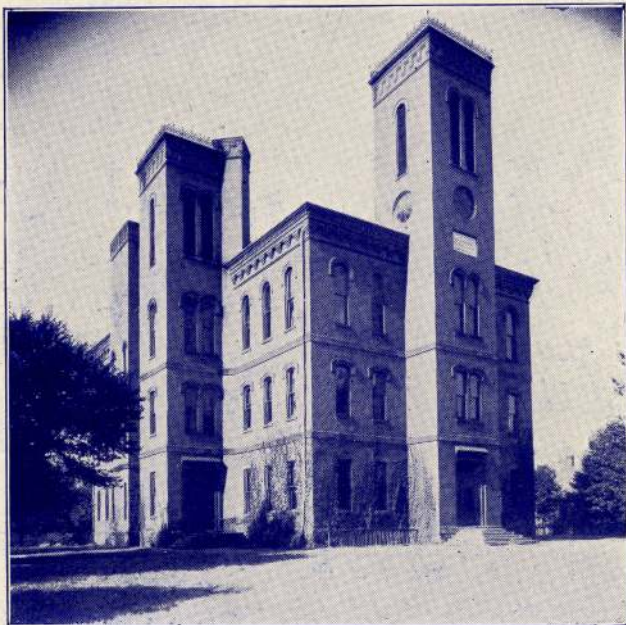
HUTCHINSON & STEVENSON—WHOLESALE HATTERS.



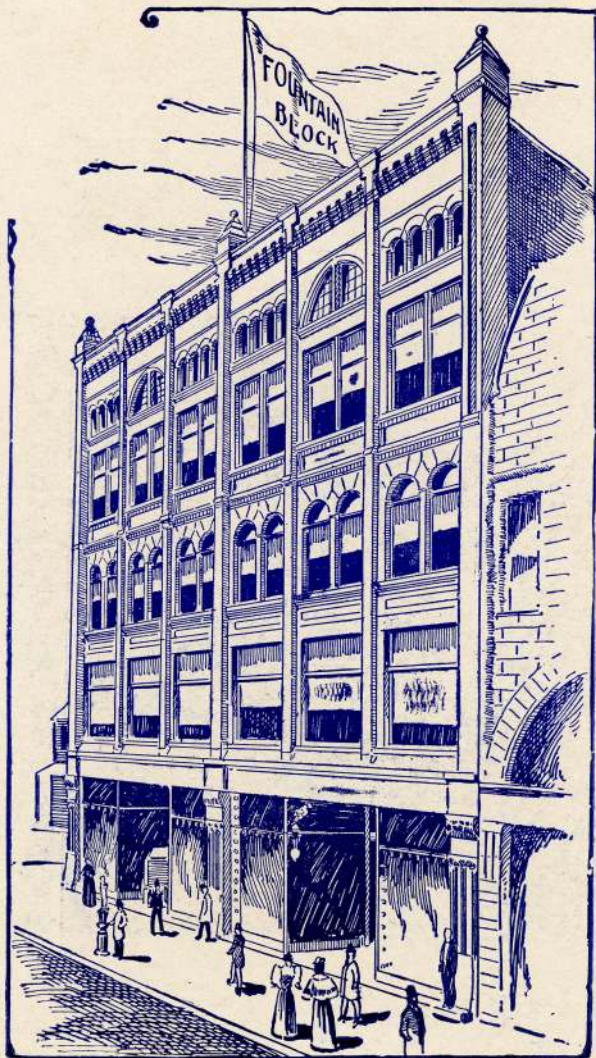
LOOKING NORTH FROM KANAWHA STREET.



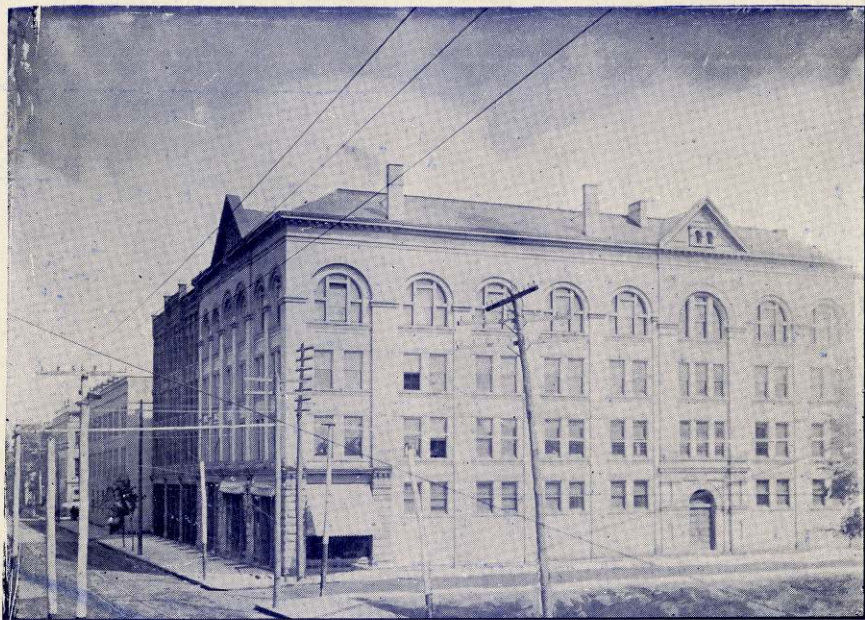
ODD FELLOWS TEMPLE.



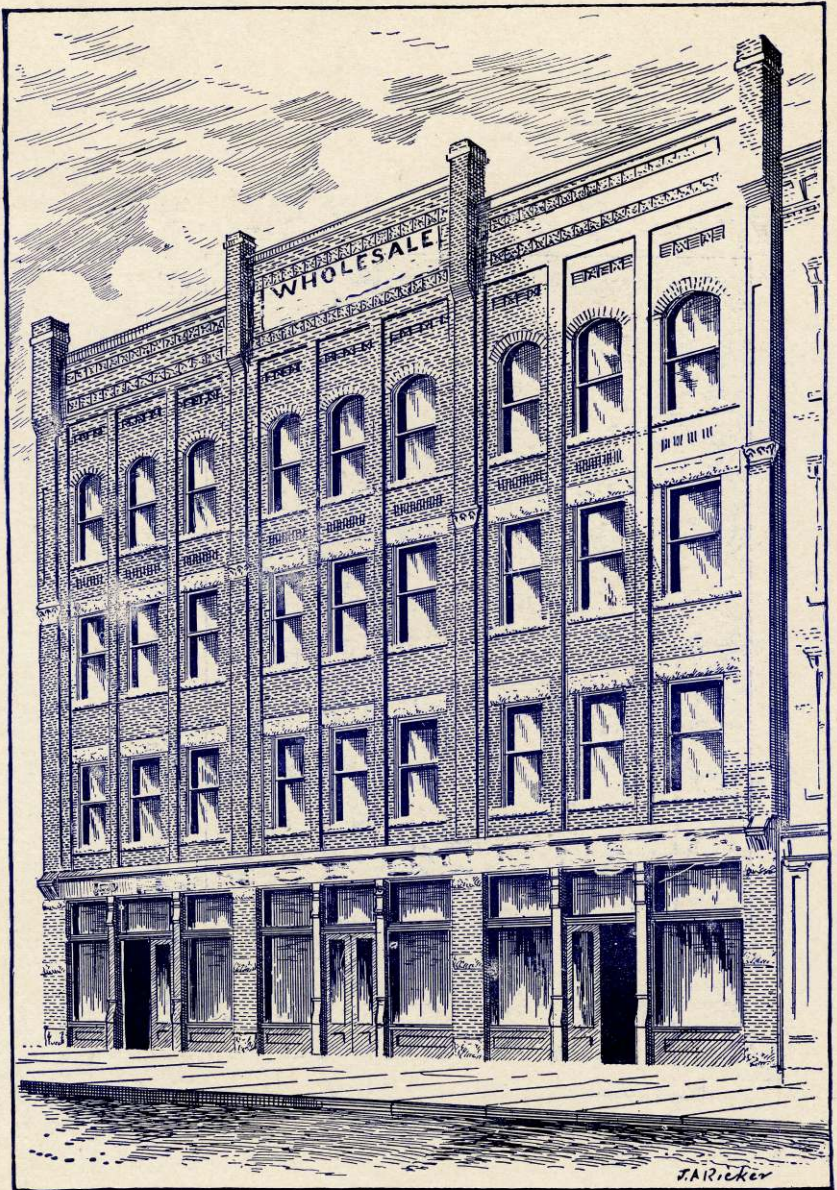
MERCER SCHOOL BUILDING.



SCHWABE & MAY—CLOTHIERS.



MASONIC TEMPLE.



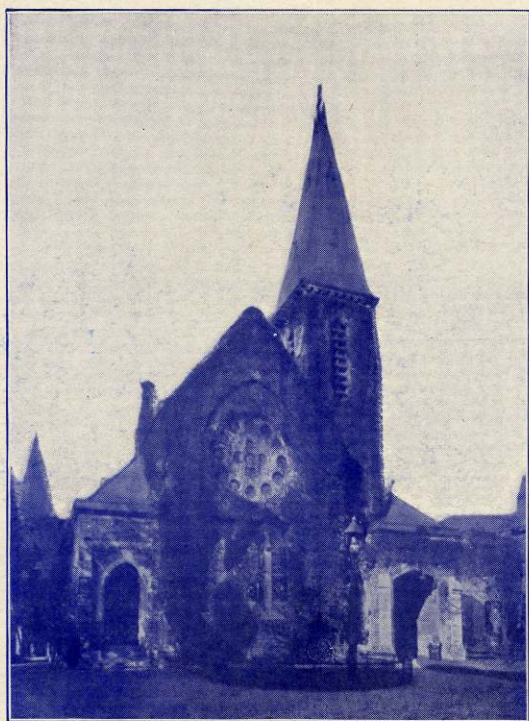
ABNEY, BARNES & CO.—WHOLESALE DRY GOODS.



CHARLESTON HIGH SCHOOL.



LOEWENSTEIN SON'S—WHOLESALE HARDWARE.



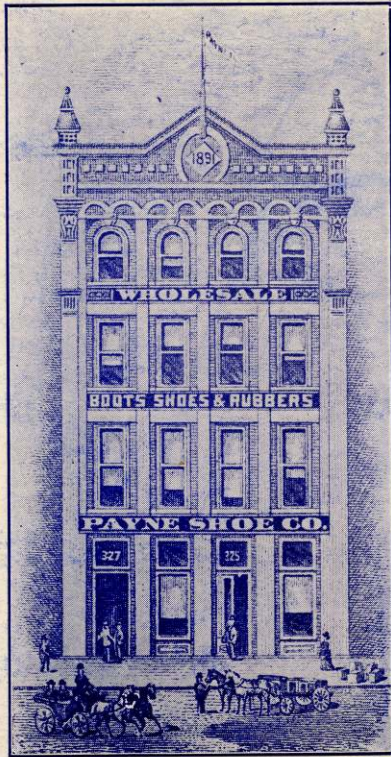
KANAWHA PRESBYTERIAN CHURCH.



ESKEW, SMITH & CANNON,
WHOLESALE AND RETAIL HOUSE FURNISHINGS.



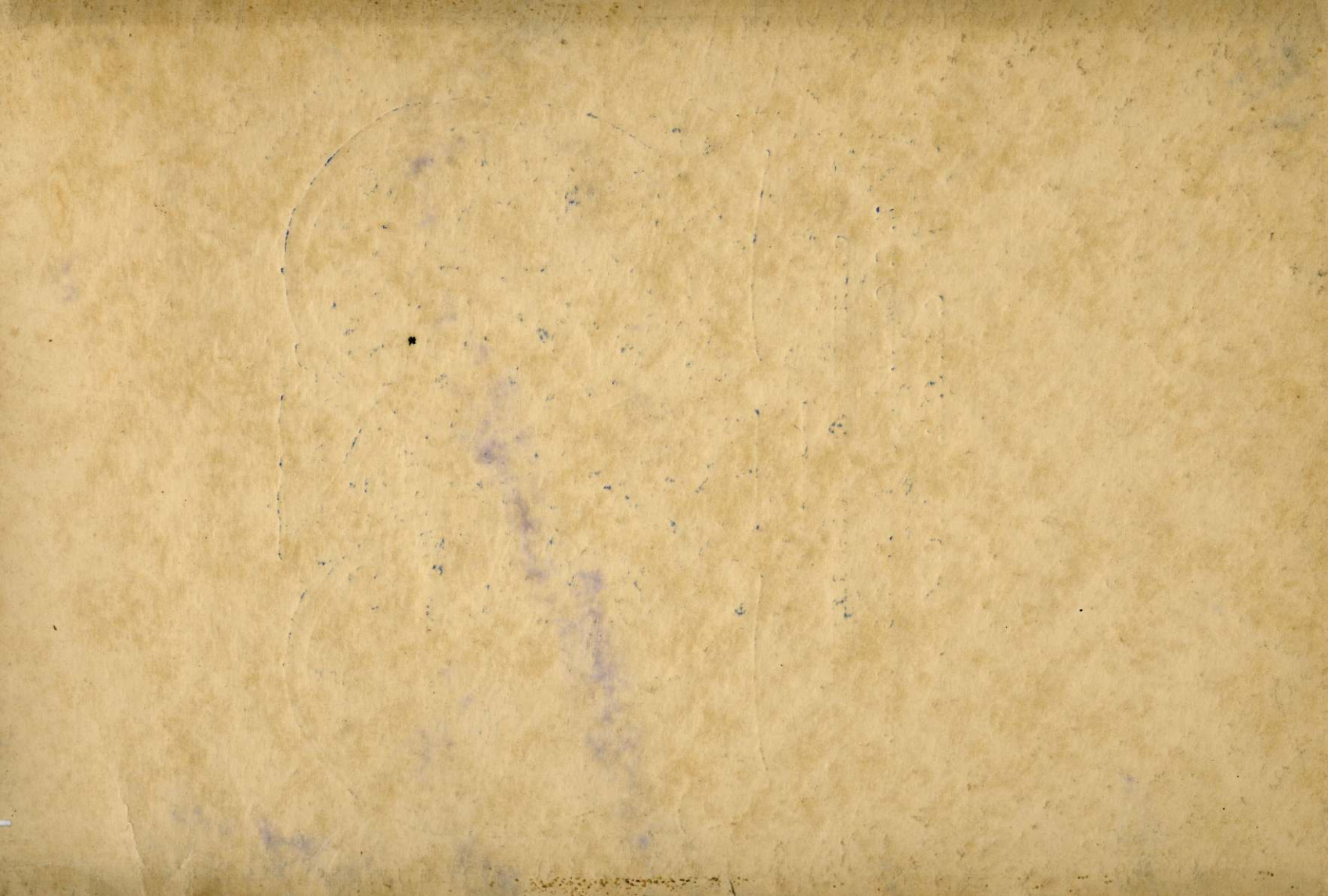
SCENE ON CHARLESTON STREET.



PAYNE SHOE COMPANY—WHOLESALE SHOES.



VIRGINIA STREET LOOKING WEST.





COMMITTEE ON ARRANGEMENTS.

W. E. Connell,

L. C. Stephenson,

C. B. Reed.

W. O. Abney,