

1500

P14226

WHITE SULPHUR SPRINGS  
WEST VIRGINIA

A EUROPEAN  
CURE  
IN AMERICA

THE GREENBRIER

White Sulphur Springs, West Virginia

FRED STERRY, Managing Director

J. H. SLOCUM, Resident Manager

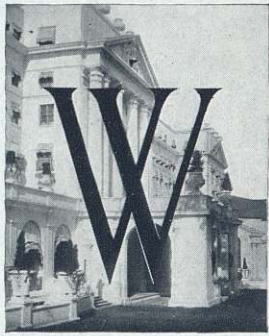
9970B



# WHITE SULPHUR SPRINGS

GREENBRIER  
• COUNTY •  
• WEST •  
VIRGINIA





**W**HAT the famous spas of Europe are to the countries across the sea, White Sulphur Springs, on the sunset slope of West Virginia, is to the United States. It is a resort whose history runs back to the very threshold of our American life, whose fame is coeval with our country, and even extends beyond, to Indian occupation and traditions. It antedates Newport and Saratoga, and its vogue has been consistently and substantially greater than theirs for more than a century. Since 1808 White Sulphur Springs has enjoyed unsurpassed prestige as a watering place. It was the favorite resort of the first families of the South in the days of opulent hospitality. It was in high repute among the early Presidents of the American Union, the great statesmen and the prominent army and navy officers who devoted their lives to the making of United States history.

The old registers and books of account—still in existence and carefully preserved—contain the now priceless autographs of many famous men and women of those days. Commodore Stephen Decatur registered in 1816; Henry Clay of Kentucky was a guest in 1817, together with Rufus Choate and Millard Fillmore. The name of Franklin Pierce appears there under the date of 1854, and that of Edward, Prince of Wales (afterward His Majesty Edward VII.) was affixed there during his tour of the United States.

White Sulphur Springs became known as a water cure very early in our country's history, how early it is not easy to determine. There are, however, authentic records of persons treated here as early as 1778. For a century



A CORNER OF THE WISTERIA ROOM

or more following this it was the popular health resort of the country, and people came thither, first by coach and later by railroad, from all portions of the East, South and Middle West, to drink the waters, the merits of which have been repeatedly attested by the highest medical authorities.

In location White Sulphur Springs is ideal. It is situated on a southerly facing slope of the Greenbrier Mountains at an altitude of 2,000 feet above the sea level. It is protected by mountain peaks that nearly surround and give it a most equable climate. It is never hot, even in mid-summer, and the nights are invariably cool. In spring and autumn the climate is most delightful, and the winters are bracing but not severe. In environment it is equally attractive. The broad fields and gentle slopes of the wide valley in which the resort is situated have the appearance of an exquisitely kept English park, in which are numerous walks and drives through splendid groves of forest trees.



ONE OF THE ENCLOSED SUN PARLORS

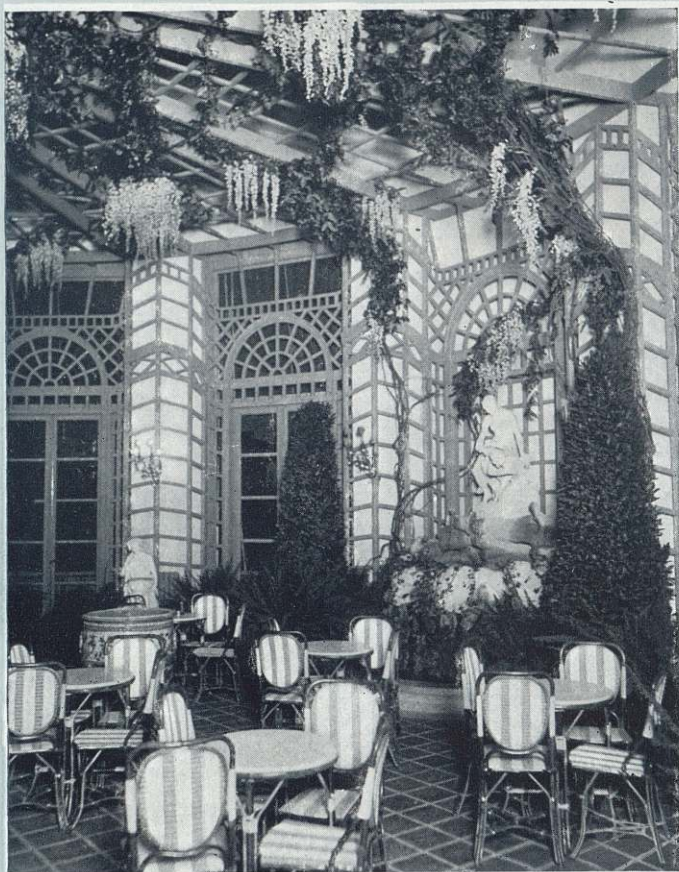
In accessibility White Sulphur Springs leaves little to be desired. It is on the main line of the Chesapeake & Ohio Railroad, and has through Pullman Sleeping, Dining and Chair Car service between all important points East, West and South.

The erection of the new "Greenbrier," a palatial structure of modern steel construction, of great size, in simple and dignified Georgian architecture, absolutely fireproof in every respect, and equipped with every convenience



A GLIMPSE OF ONE OF THE PORTALS

for the comfort of guests, provides White Sulphur Springs with a resort hotel which is unsurpassed anywhere in the world. Every facility that experience could suggest or genius create has been incorporated in the new "Greenbrier." The public rooms are unusually ample, complete and conveniently arranged. All sleeping rooms have toilet and lavatory, and most of them are equipped with private baths. The service throughout is of the same high character to be found in the other hotels under the same



THE COFFEE ROOM

management. The cuisine, which is of a very high order, includes in its arrangements a Diet Kitchen for the preparation of food for those requiring specialized or restricted dietary arrangements.

The "Greenbrier" is operated on the European Plan exclusively, and is under the direction of Mr. Fred Sterry of the Hotel Plaza, New York, and the Copley-Plaza, Boston. Mr. J. H. Slocum is the resident manager.

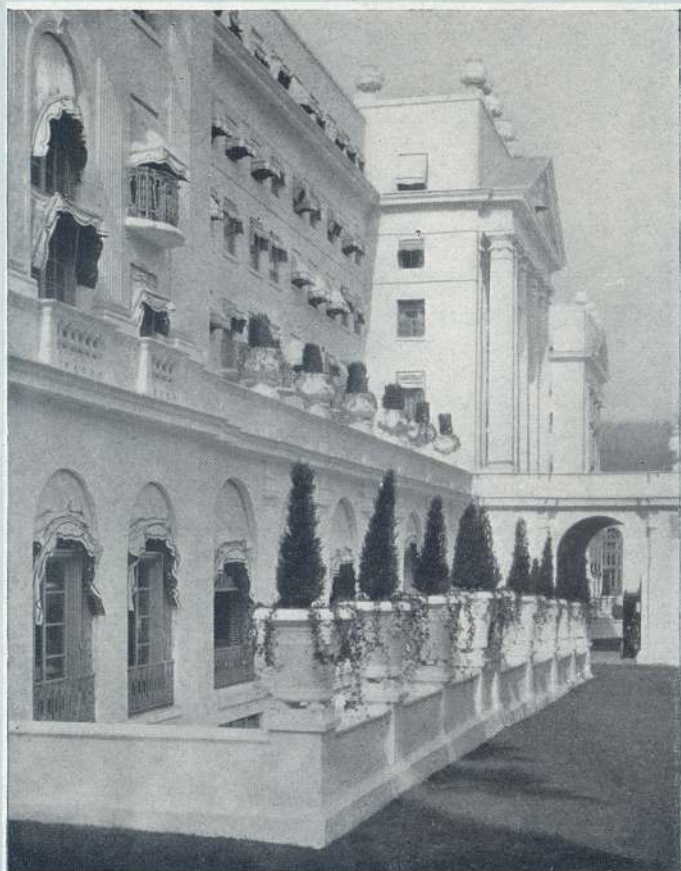
The new Bath Establishment, which closely adjoins the





A FOUNTAIN IN THE SMOKING LOUNGE

hotel and is connected with it by means of a private enclosed loggia, is the most complete and luxurious in its appointments of any institution of its kind in America. It was built to provide every facility for treatment that can be found in the best European resorts, and nobly accomplishes its object. In the center of the building is the great sun-lighted swimming pool, in which is a continual flow of crystal clear water, kept at uniformly agreeable temperature. The bath equipment includes the latest appli-



A VIEW OF THE CLASSIC FAÇADE

ances for giving every approved form of hydropathic or electropathic treatment that can be obtained at any of the famous European health resorts, including Radium, Nauheim and Vichy Baths, the Aix Douche, Radio-Active Sulphur and Mud Baths, etc. The Baths are under the personal supervision of Dr. G. D. Kahlo, formerly Director at French Lick Springs and Professor of Medicine at Indiana University.

Besides the extensive hotel accommodations, there are



A FIRE-PLACE IN THE LOUNGE

some fifty or sixty cottages. These are particularly attractive in construction and location, and are greatly favored by those who desire quiet and seclusion, or who wish to secure homelikeness and privacy during a prolonged stay.

The grounds about the hotel and baths are splendidly laid out and greatly beautified. The verandas are broad, breeze-swept, cool and restful. The immediate lawns, tree-shaded and perfectly kept, are equipped with rustic



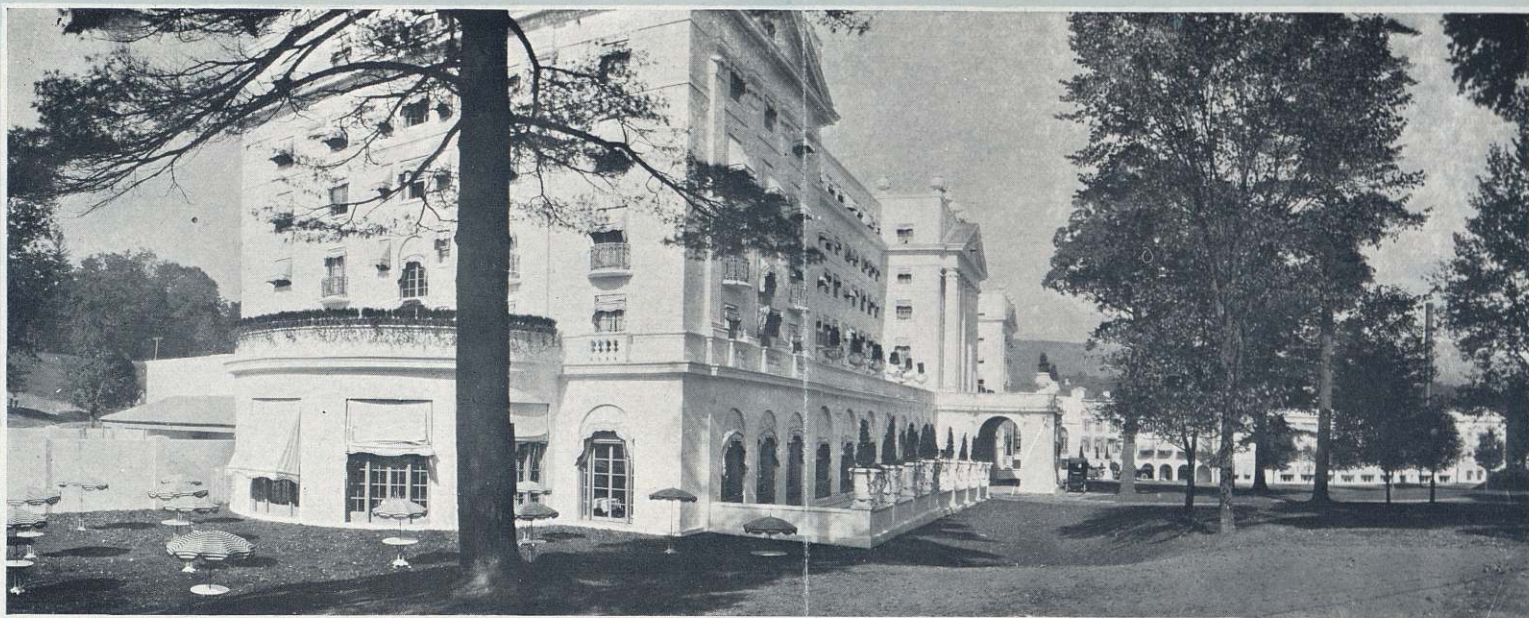
THE SPRING ROOM

tables and chairs, and are popular for afternoon teas for which fine orchestral music is provided. Smooth and delightful walks and drives lead everywhere through the grounds, to the perfectly located tennis courts, to the splendid 18-hole golf course—one of the finest in the entire South (see next to last page of Folder)—and to the broad high-ways which lead to the beautiful surrounding country and the lofty mountains whose forest-clad summits mark the distant horizon.

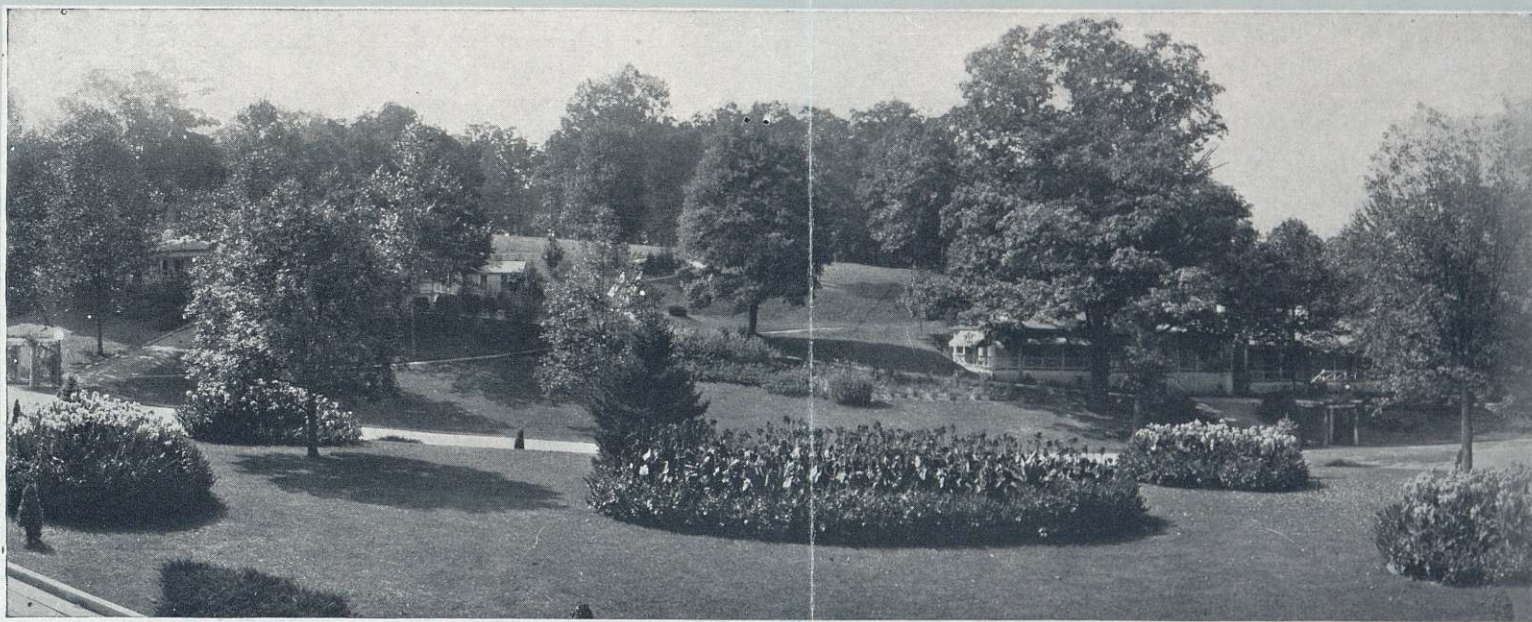
FRED STERRY, Managing Director  
J. H. SLOCUM, Resident Manager



THE ENTRANCE TO THE HOTEL PARK



VIEW OF THE GREENBRIER AND THE BATH ESTABLISHMENT



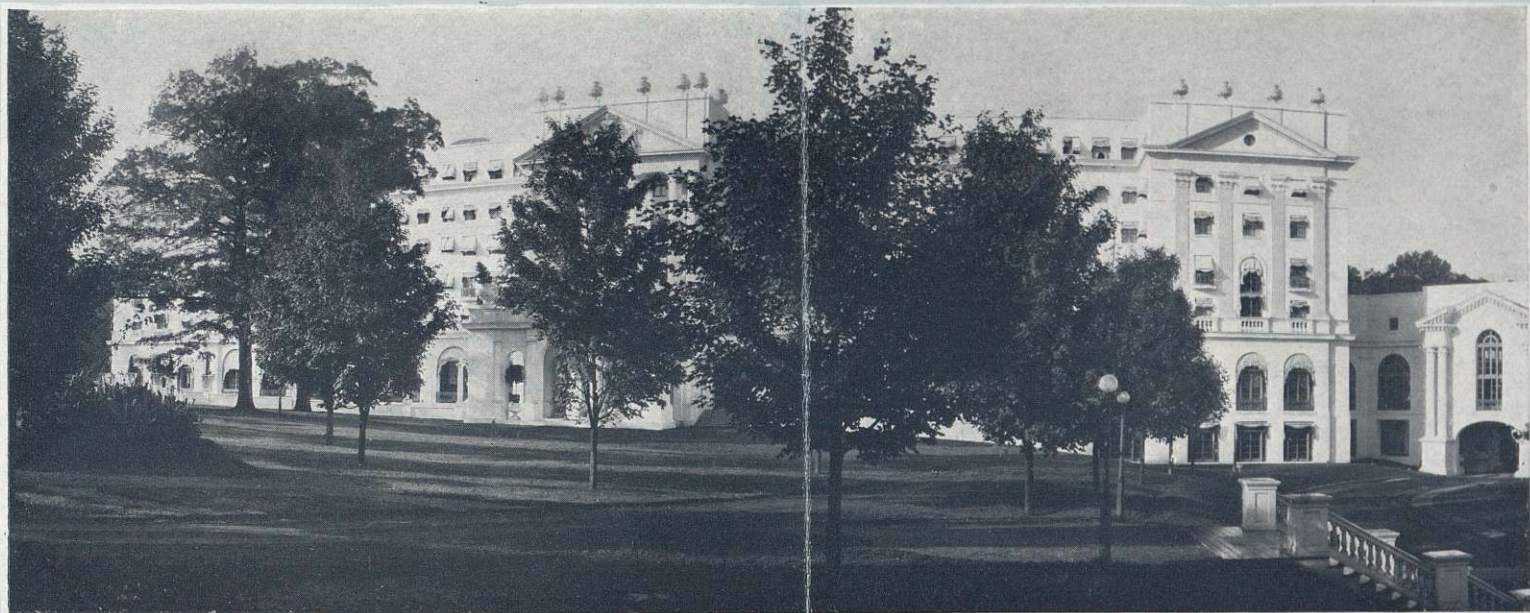
WHAT ONE LOOKS OUT UPON FROM THE WINDOWS OF THE GREENBRIER



AFTERNOON TEA ON THE LAWN IS ONE OF THE SOCIAL FUNCTIONS OF EACH DAY



THE EVERLASTING MOUNTAINS WHICH STRETCH AWAY IN EVERY DIRECTION



THE GREENBRIER HOTEL HAS BEEN FITTINGLY TERMED AN ARCHITECTURAL GEM



THE WHITE SULPHUR SPRING WHICH HAS BEEN FAMOUS FOR TWO CENTURIES

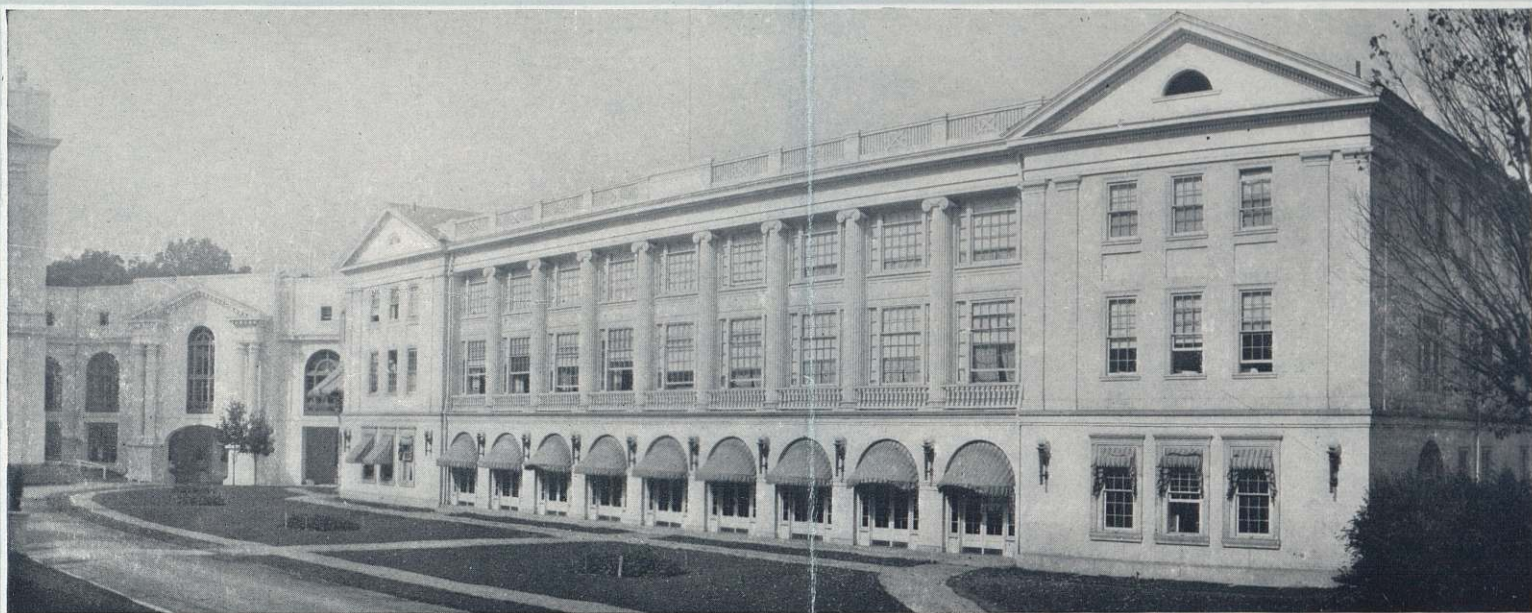


THE EXQUISITE BALL-ROOM, THE SCENE OF MANY BRILLIANT GATHERINGS



THE GREENBRIER IS SURROUNDED BY ONE OF THE MOST BEAUTIFUL NATURAL PARKS

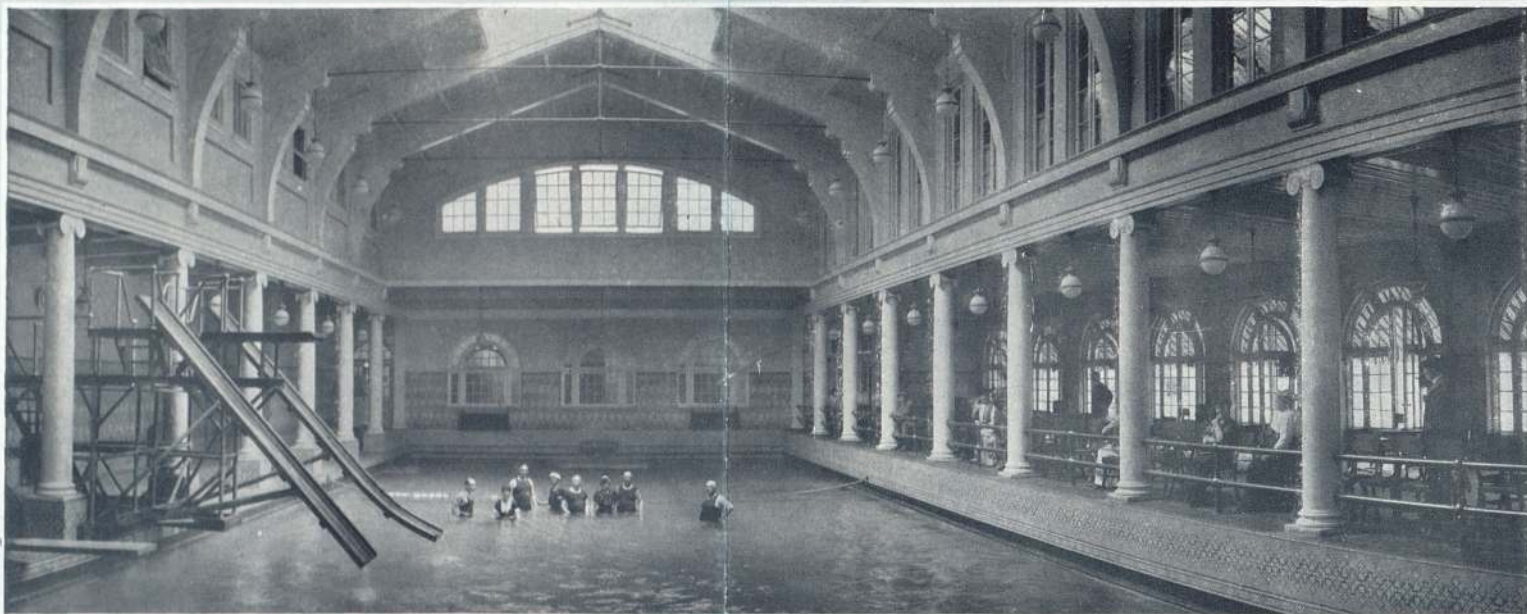




THE MOST PERFECTLY EQUIPPED BATHING ESTABLISHMENT IN AMERICA



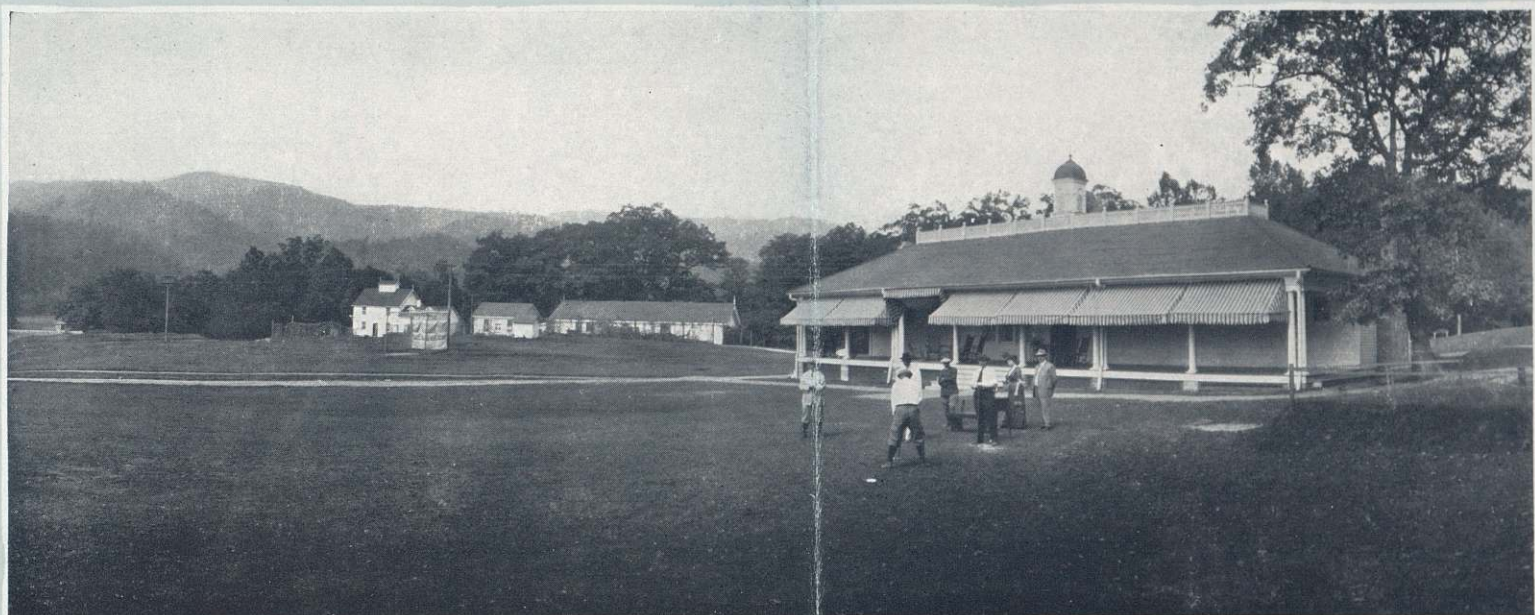
THE LAKE ADDS TO THE PICTURESQUENESS OF THE GOLF COURSE



THE WHITE TILED SUN-LIGHTED BATHING POOL WITH ITS EVER-CHANGING CRYSTAL WATER



VIEW FROM ONE OF THE DRIVES THROUGH THE HOTEL PARK



THE GOLF CLUB HOUSE AND THE FIRST TEE



NO GOLF COURSE HAS A FINER SETTING OF MOUNTAIN AND DALE



THERE ARE PLENTY OF NATURAL AS WELL AS ARTIFICIAL HAZARDS ON THE GOLF COURSE



IN PLACES THE GOLF COURSE HAS THE APPEARANCE OF AN ENGLISH PARK

# GOLF AT WHITE SULPHUR SPRINGS

H. J. WHIGHAM IN "TOWN AND COUNTRY"



THE New Golf Links at White Sulphur Springs will be beyond a doubt one of the finest courses in the country, and probably the very best south of Philadelphia. The situation, in a narrow valley flanked by wooded mountains, is one of great natural beauty, reminding the traveller of the golf links at Pau in France which has long been celebrated as one of the most beautiful in Europe. And, next to the character of the soil, scenery is the most important asset that a golf links can possess. In this case the two main requisites are combined; for the alluvial deposit of the valley provides all that is desirable in the way of soil. Added to these natural advantages is the factor of golf architecture which has come to be recognized as the newest feature of American golf. The most modern ideas have been applied to the laying out of the new course.

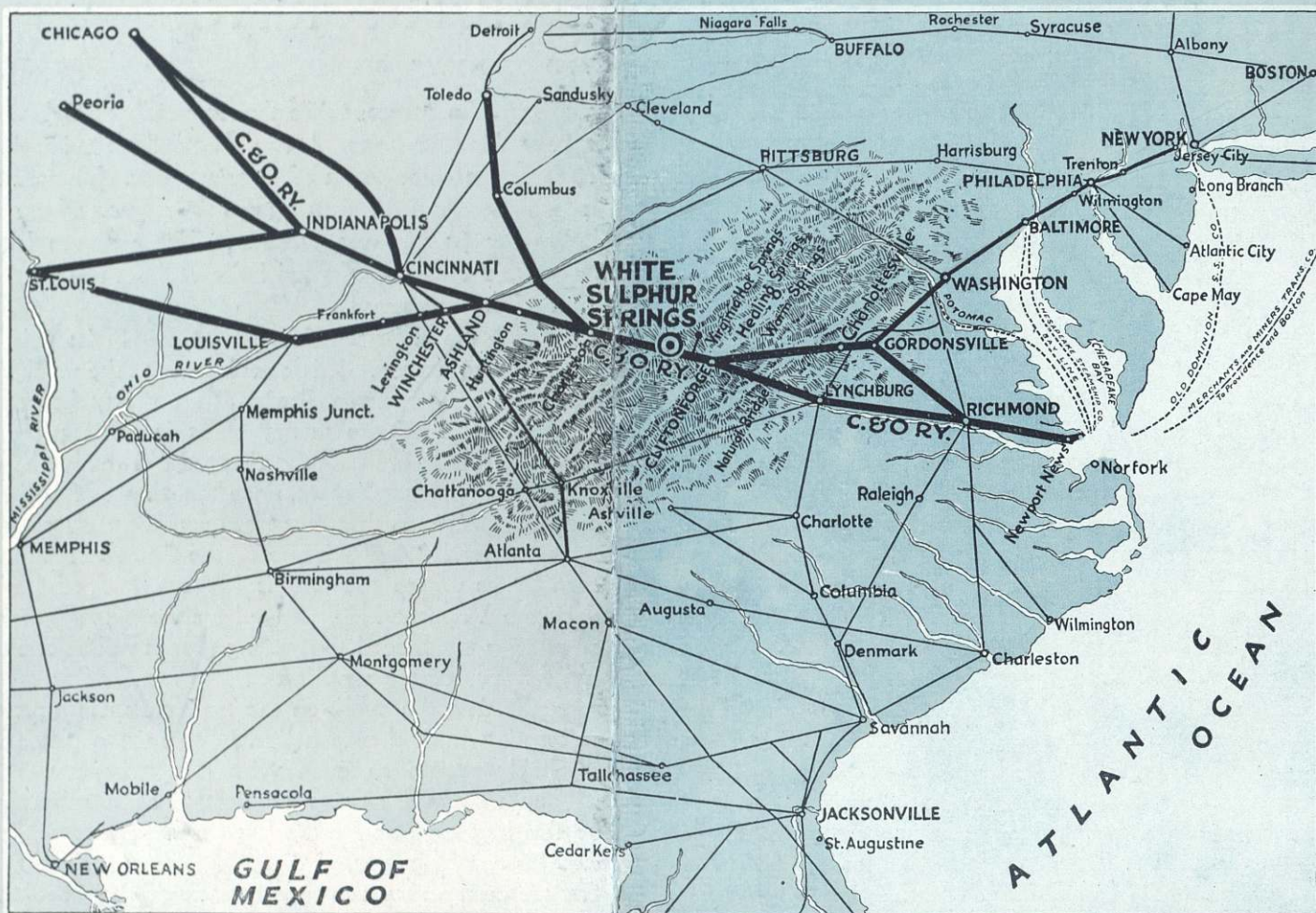
The distance for the eighteen holes will be 6250 yards, an ideal length for a first class course. And the holes will embrace many of the features which are associated with the National Golf Links at Southampton, L. I. Mr. C. B. McDonald, the founder of the National, who is recognized as the greatest authority on golf architecture in the country, has kindly lent his assistance, and his advice has been carried out by Mr. Seth Rayner, who did a great deal of work on the new Piping Rock course on Long Island. As might be expected, many of the holes will be reminiscent of the National and Piping Rock. The short holes, by which a golf course generally stands or falls, are all first class. They include a "Redan" and an "Eden" hole, and a full drive hole taken from Biarritz in France which has also been used at Piping Rock.

The longer holes are well conceived, and they include two or three of the "dog's hind leg" variety without which no modern course is complete. The ground is naturally undulating, presenting many natural features which will give

individuality to the course, while the river makes a splendid water hazard in four holes. It would be difficult to imagine a more fortunate combination of circumstances. The soil is a light loam, excellent for growing the finer grasses, but not too heavy for play in wet weather. The contours lend themselves to the making of good holes, and the river is the best kind of water hazard.

It is impossible to make first class golf courses in these days without spending money. It is calculated that the work of laying out the new course will cost at least forty thousand dollars, irrespective of the money spent in moving some buildings which interfere with the first tee and the last hole. But it will be money well spent, since the climate of White Sulphur Springs is such that it can be made a golfing center all the year round. And it is one of the few places in the Southern States where the turf is like the turf of Long Island or the Vermont Hills, and where the putting greens are of real grass. Indeed the putting greens will be one of the fine features of the new links.

During the time the work on the new course is in process next spring the old nine holes will be open to play and will probably remain so, even when the new course is opened, as they will always be needed as a subsidiary course for beginners or for the less ardent golfers. But the club house will be moved down towards the river, and the first tee of the new course will be on the very bank of the stream. From that point on to the short eighteenth hole, which crosses the river again, the golf will be of the first order. But it will not be too difficult. The architects of the course have not forgotten that White Sulphur Springs is a pleasure resort, and while they have got as far away as possible from the regular type of hotel course, they have not made the task too severe for those who regard golf as a holiday pastime.



MAP SHOWING THE LOCATION OF WHITE SULPHUR SPRINGS, WEST VIRGINIA

White Sulphur Springs is located on the main line of the Chesapeake & Ohio Railway, in the heart of the Blue Ridge Mountains. It is 475 miles from New York and 353 miles east of Cincinnati, Ohio.

It is reached (through Pullman compartment and sleeping cars) in fourteen hours from New York and eleven hours from Cincinnati.

The "F. F. V." solid vestibuled Limited train over the Penna. and Chesapeake & Ohio Railroads leaves New York at 5.08 P. M., Philadelphia 7.32 P. M., and Washington 11.00 P. M. daily arriving at White Sulphur Springs at 7.46 A. M.

The "C. & O. Limited" leaves Chicago at 12.45 P. M. and Cincinnati at 9.00 P. M., arriving at White Sulphur Springs at 8.05 A. M.



